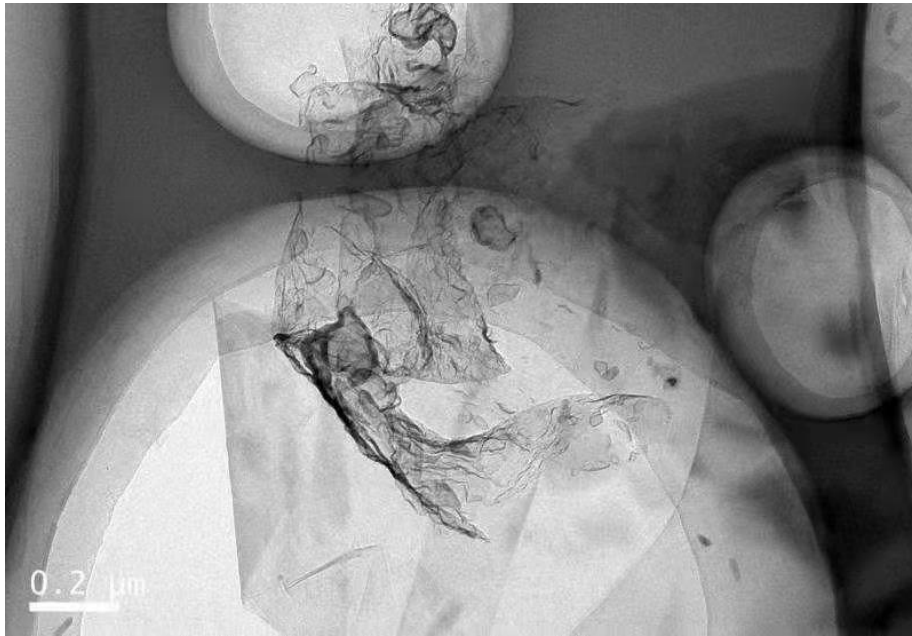


# 物理法石墨烯 JCPG-99-6-50

Data	Unite	The numerical
Thickness	nm	<3
Diameter	$\mu\text{m} * \mu\text{m}$	50*50
Purity	%	99.7



Sample : 石墨  
 Operator:  
 Comment : 20 deg/min , for Metal  
 Group : [Qual-Quant.]20mm-Metal-BCN  
 Date : 2014-03-04 13:09

[Quantitative Result]

Analyte	Result	Proc-Calc	Line	Net Int.	BG Int.
C	99.7362 %	Quant.-FP	C Ka	80.090	7.001
S	0.1033 %	Quant.-FP	S Ka	12.031	0.613
Si	0.0671 %	Quant.-FP	SiKa	2.956	0.023
Ca	0.0325 %	Quant.-FP	CaKa	7.490	0.678
Al	0.0171 %	Quant.-FP	AlKa	0.581	0.025
Na	0.0149 %	Quant.-FP	NaKa	0.054	0.013
Mg	0.0091 %	Quant.-FP	MgKa	0.076	0.031
Fe	0.0072 %	Quant.-FP	FeKa	3.844	1.417
K	0.0058 %	Quant.-FP	K Ka	1.338	0.270
Ni	0.0019 %	Quant.-FP	NiKa	1.862	2.332
P	0.0017 %	Quant.-FP	P Ka	0.242	0.123
Cr	0.0017 %	Quant.-FP	CrKa	0.430	0.579
Cu	0.0013 %	Quant.-FP	CuKa	1.308	2.836